



# Willems

baling equipment

## BPV-1000-HL10 Pet baler

**Suitable for:**  
Wood shavings, chopped hay/straw, mulches, sawdust, pin chips, insulation, paper pulp, products with low density.

**Geschikt voor:**  
Houtkrullen, gehakseld stro/hooi, mulch, zaagsel, pin chips, isolatiematerialen, papier pulp, producten met lage dichtheid.

**Geeignet für:**  
Hobelspäne, gehäckseltes Stroh/Heu, Torf, Sägemehl, Nadelspäne, Isoliermaterialien, Papierpulpe, Produkte mit geringer Dichte.

**Convient pour:**  
Copeaux de bois, paille/foin haché, paillis, sciure, bois déchiqueté, matériel isolant, pulpe de papier, produits avec densité basse.

**Apropiado para:**  
Virutas de madera, paja/heno picado, turba, serrín, madera triturada, aislamiento, pulpa de papel, productos con densidad bajo.



# Bale press and packaging machine

# Willems baler

## Capacity:

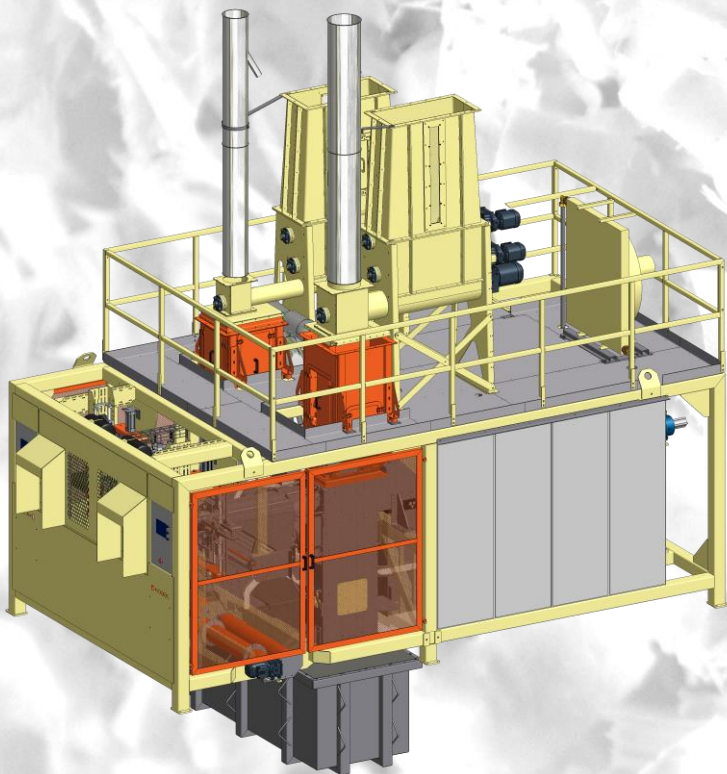
Double machine: 1000 bales / hour.  
Single machine: 500 bales / hour.  
(depending on bale size and product.)

## Bale size:

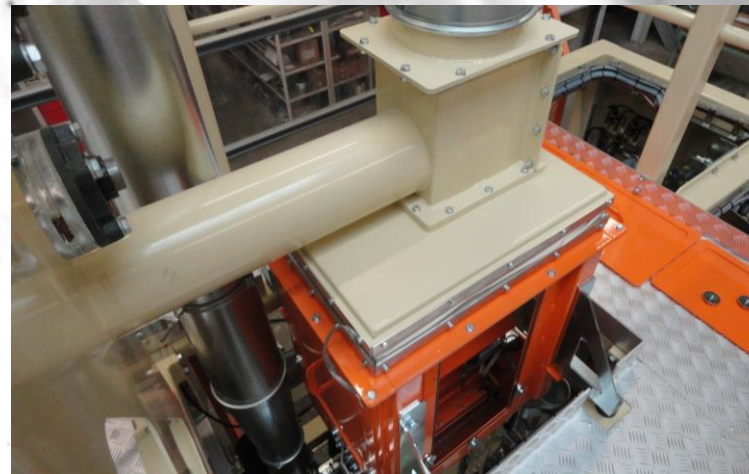
According to customer specification  
Standard: 600 x 395 x 120 mm. (LxWxH).  
(Length of the bale is adjustable)

## Bale weight:

1 up to 10 kg (depending on bulk density  
and compression ratio)



Baler and bundling machine



Dosing auger and weighing hopper



Handgrip on top side of the bale.

## Machine dimensions double machine

6000 x 3000 x 5000 mm (LxWxH).  
236" x 118" x 197" (LxWxH).